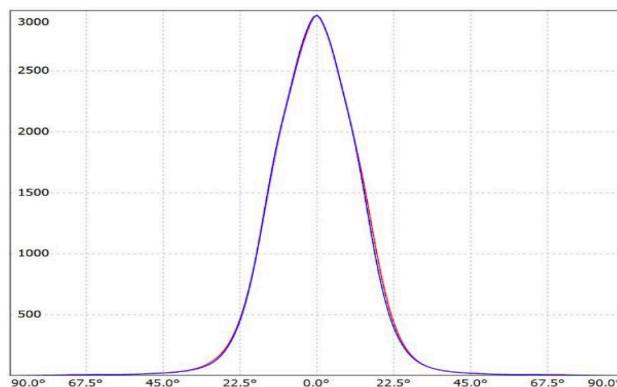
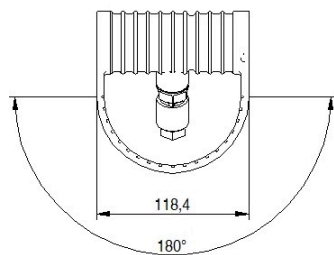
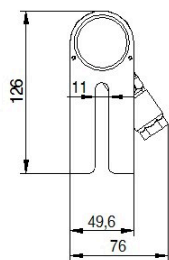


# SPL02.4001.26.SS

Grünzell®

## Description

IP67 Class I LED Spotlight with built in LED driver. Single body made of solid stainless steel (SS316) for versatile mounting. Narrow TIR-lens made of PMMA. Highly efficient high power LED. Different light distributions and colour temperatures can be achieved with accessory filters. Mounting slot, 11mm wide, allowing fixation and aiming with single bolt/screw.



**LED Lamp**  
**Luminous Flux**  
**Colour temperature**  
**CRI**  
**MacAdam Ellipse**  
**Nominal Power**  
**Beam Angle**

1  
557 lm  
4000 K  
80  
3 Step  
5W  
26°

**Ingress Protection**  
**Impact Protection**  
**Body**  
**Weight**  
**Finish**  
**Line Voltage**  
**Electrical Gear**

IP67  
IK10  
Die cast Stainless Steel  
0.85kg  
Power coat finish in white RAL9016, grey RAL9006 or black 9005  
100 ~ 270V / 50-60Hz  
IP67 LED Driver in a thermally separated compartment

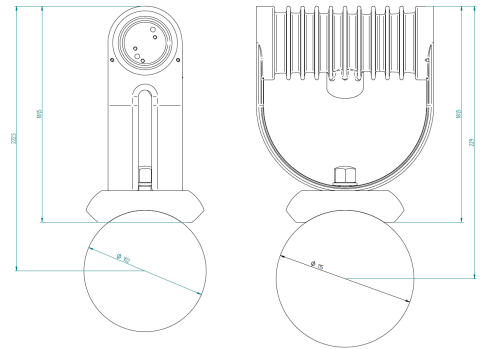
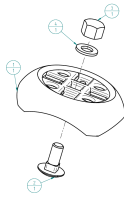
# SPL02.4001.26.SS

Grünzell®

## Mounting Accessories

Pedestal  
Stainless Steel (316)

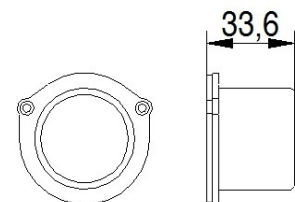
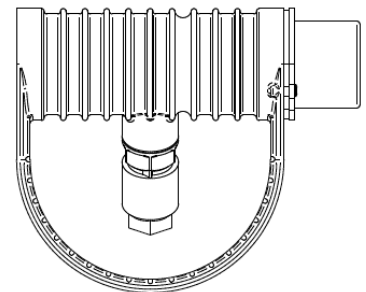
EQUUS Pedestal



## Optical Accessories

Snoot  
Stainless Steel (316)

Spektor\_39 Snoot



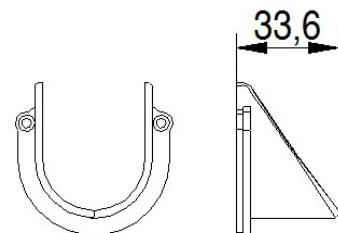
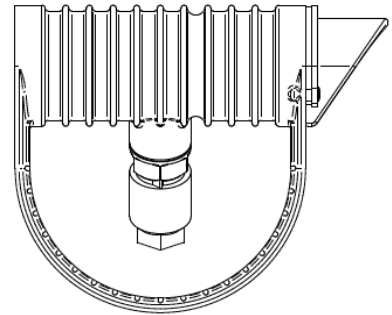
# SPL02.4001.26.SS

Grünzell®

## Optical Accessories

Glare Shield  
Stainless Steel (316)

Spektor\_39 Glare Shield



Lenses and Filters

Spektor\_39 Lenses and Filters and Honeycomb  
Louvre

