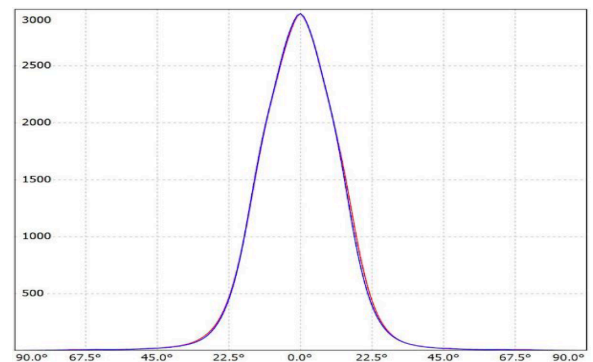
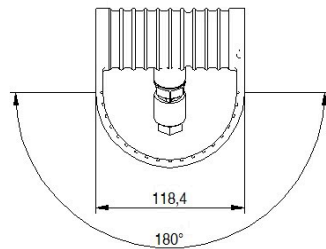
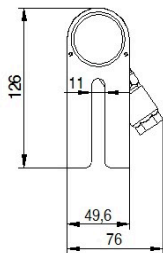
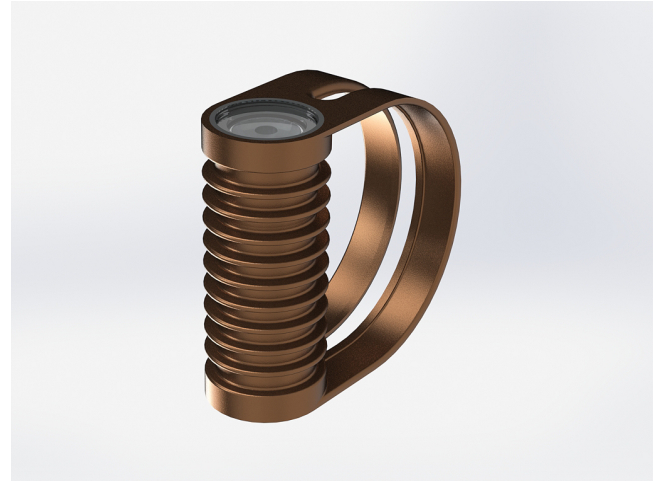


# SPL02.3001.26.B

Grünzell®

## Description

IP67 Class I LED Spotlight with built in LED driver. Single body made of solid bronze with more than 90% copper for versatile mounting and harsh environments. Narrow TIR-lens made of PMMA. Highly efficient high power LED. Different light distributions and colour temperatures can be achieved with accessory filters. Mounting slot, 11mm wide, allowing fixation and aiming with single bolt/screw.



**LED Lamp**  
**Luminous Flux**  
**Colour temperature**  
**CRI**  
**MacAdam Ellipse**  
**Nominal Power**  
**Beam Angle**

1  
624 lm  
3000 K  
80  
3 Step  
7W  
26°

**Ingress Protection**  
**Impact Protection**  
**Body**  
**Weight**  
**Line Voltage**  
**Electrical Gear**

IP67  
IK10  
Die cast Bronze (> 90% copper)  
0.93kg  
100 ~ 270V / 50-60Hz  
IP67 LED Driver in a thermally separated compartment

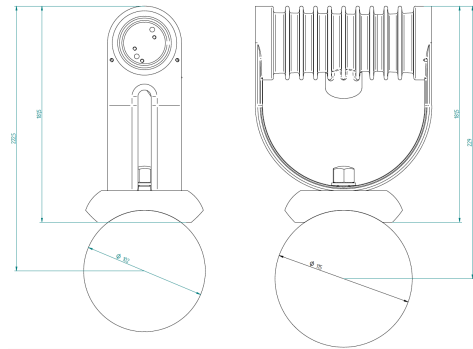
**SPL02.3001.26.B**

Grünzell®

## Mounting Accessories

Pedestal  
Bronze

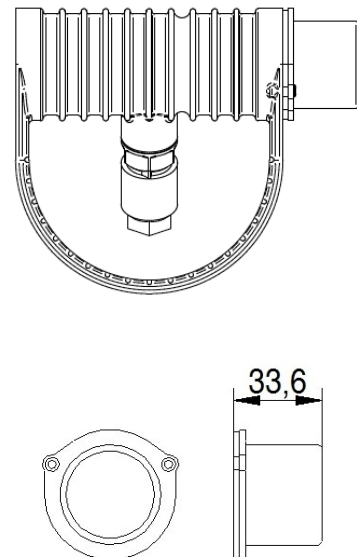
EQUUS Pedestal



## Optical Accessories

Snoot  
Bronze

Spektor\_39 Snoot



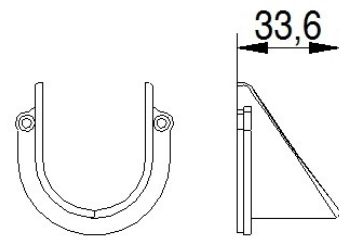
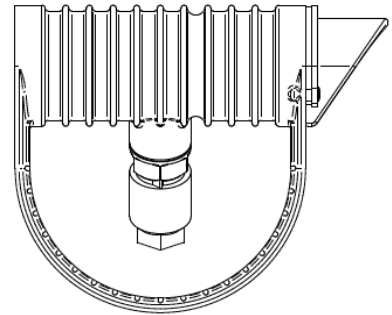
# SPL02.3001.26.B

Grünzell®

## Optical Accessories

Glare Shield  
Bronze

Spektor\_39 Glare Shield



Lenses and Filters

Spektor\_39 Lenses and Flim Filters and  
Honeycomb louvre

