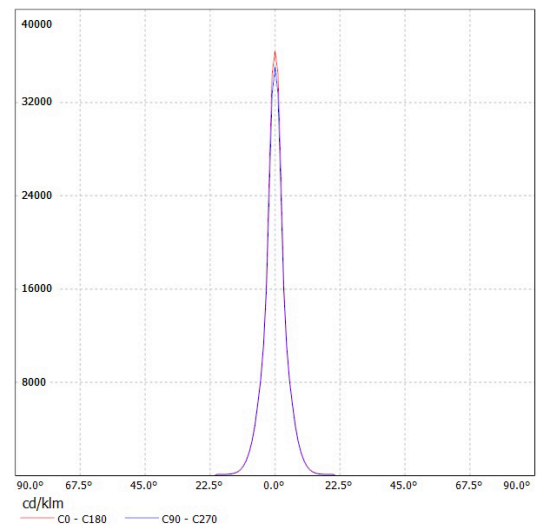
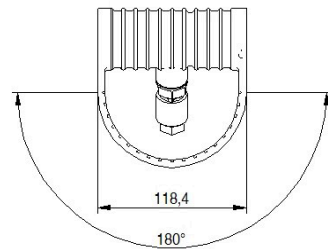
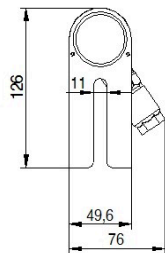
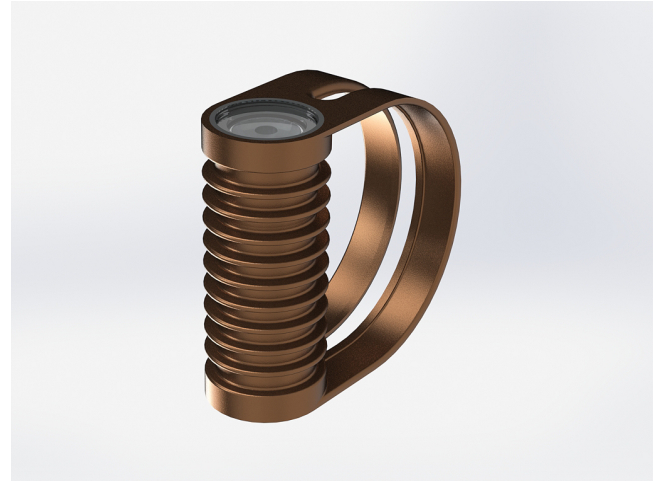


SPL02.2701.06.B

Grünzell®

Description

IP67 Class I LED Spotlight with built in LED driver. Single body made of solid bronze with more than 90% copper for versatile mounting and harsh environments. Narrow TIR-lens made of PMMA. Highly efficient high power LED. Different light distributions and colour temperatures can be achieved with accessory filters. Mounting slot, 11mm wide, allowing fixation and aiming with single bolt/screw.



LED Lamp
Luminous Flux
Colour temperature
CRI
MacAdam Ellipse
Nominal Power
Beam Angle

1
556 lm
2700 K
80
3 Step
7W
6°

Ingress Protection
Impact Protection
Body
Weight
Line Voltage
Electrical Gear

IP67
IK10
Die cast Bronze (> 90% copper)
0.93kg
100 ~ 270V / 50-60Hz
IP67 LED Driver in a thermally separated compartment

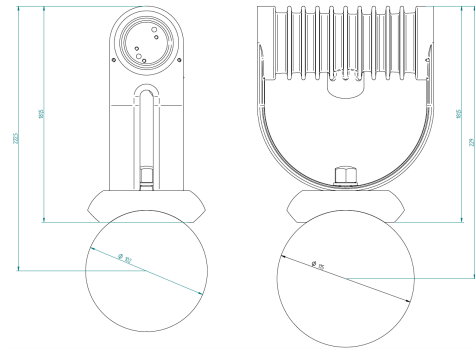
SPL02.2701.06.B

Grünzell®

Mounting Accessories

Pedestal
Bronze

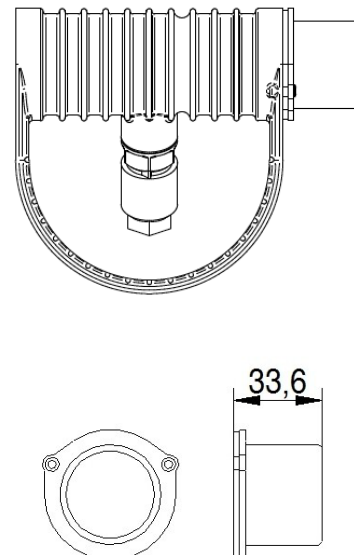
EQUUS Pedestal



Optical Accessories

Snoot
Bronze

Spektor_39 Snoot



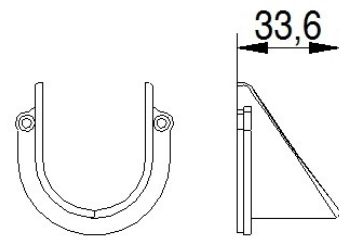
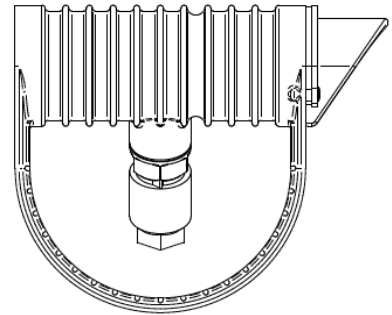
SPL02.2701.06.B

Grünzell®

Optical Accessories

Glare Shield
Bronze

Spektor_39 Glare Shield



Lenses and Filters

Spektor_39 Lenses and Flim Filters and
Honeycomb louvre

