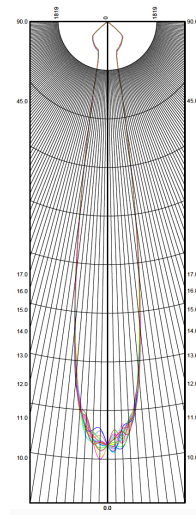
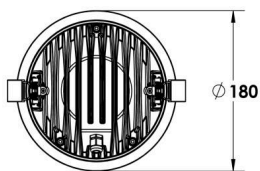
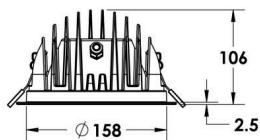
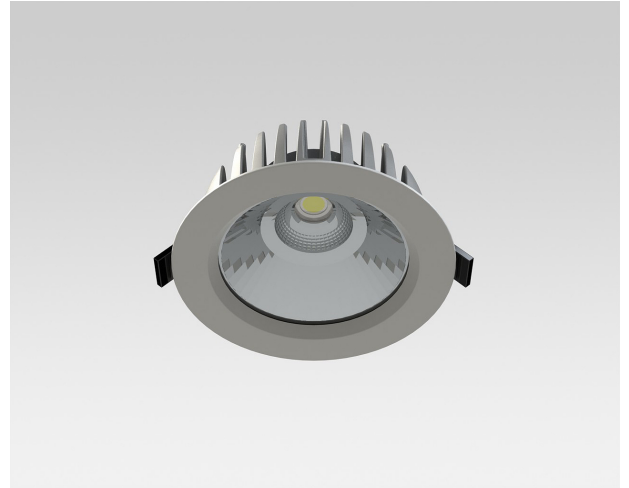


# RDL03.4004.15

Grünzell®

## Description

Recessed LED down light, protection class IP65 for remote driver operation. Surface powder coated die-cast aluminium housing. For ceiling thickness up to 22 mm. With LED engines for 11 W to 40 W operation. For ceiling cutouts of DA 160 mm. Luminous flux between 1200 lm and 4300 lm. Operation by constant current drivers. Compact design. Suitable for exterior uses as well as for interior applications. Typical uses for shops, office, restaurants and residential application. Housing compartment made by die cast aluminium acting as heat sink up to 55 W LED power. All screws made by stainless steel. With M12 cable entry and 0.5 Meter connecting cable. Tempered safety glass cover. With powder coated aluminium bezel ring. Faceted aluminium reflector in satin-matt finish. Installation by two-spring fastening system. LED Driver is not included and needs to be ordered separately



<b>LED Lamp</b>	1
<b>Luminous Flux</b>	5597 lm
<b>Colour temperature</b>	4000 K
<b>CRI</b>	80
<b>MacAdam Ellipse</b>	3 Step
<b>Nominal Power</b>	40W
<b>Beam Angle</b>	15°

<b>Ingress Protection</b>	IP65
<b>Impact Protection</b>	IK08
<b>Body</b>	Cast Aluminium
<b>Weight</b>	1.2 kg
<b>Finish</b>	Power coat finish in white RAL9016, grey RAL9006 or black 9005
<b>Line Voltage</b>	100 ~ 270V / 50-60Hz
<b>Electrical Gear</b>	IP67 LED Driver sold separately