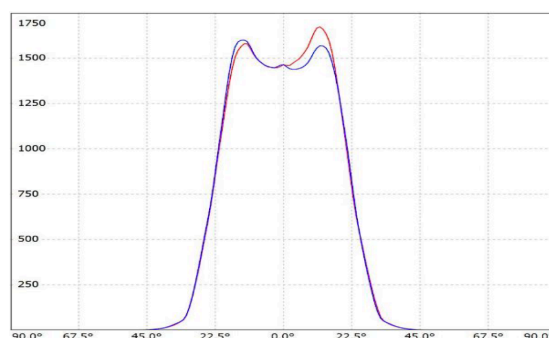
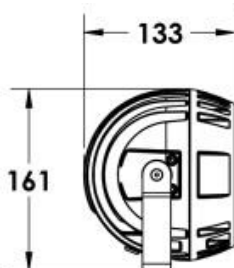
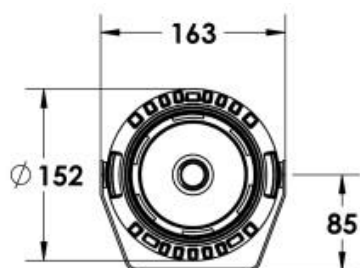
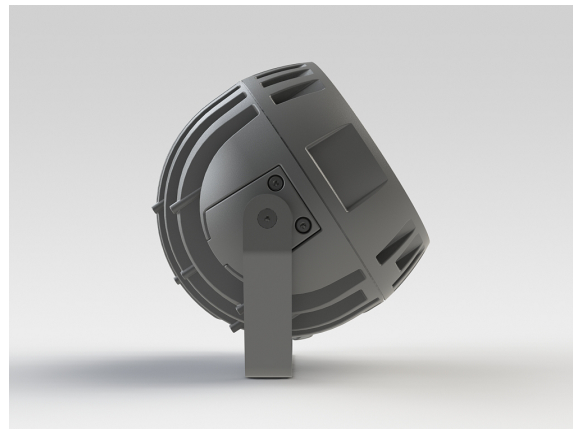


PJL05.3002.47

Grünzell®

Description

IP65 Class I LED Projector with remote LED driver. Surface powder coated corrosion resistant die cast aluminium alloy housing. Featured GORE®Vent to protect the internal system from moisture. Silicon rubber gasket and stainless steel 316 screws. Highly specular reflector. Tempered glass cover. COB LED with socket.



| | |
|---------------------------|---------|
| LED Lamp | 1 |
| Luminous Flux | 3138 lm |
| Colour temperature | 3000 K |
| CRI | 80 |
| Nominal Power | 25W |
| Beam Angle | 47° |

| | |
|---------------------------|--|
| Ingress Protection | IP65 |
| Impact Protection | IK08 |
| Body | Die cast aluminium alloy |
| Weight | 1.6kg |
| Finish | Power coat finish in white RAL9016, grey RAL9006 or black 9005 |
| Line Voltage | 100 ~ 270V / 50-60Hz |
| Electrical Gear | IP67 LED Driver in a thermally separated compartment |

PJL05.3002.47

Grünzell®

Mounting Accessories



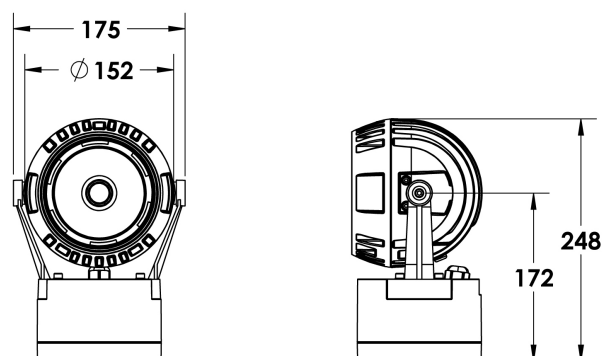
Cast Stirrup
Powder coated die cast aluminium

7210.000.X2.xx



IP65 Gear Base
Powder coated die cast aluminium

P-ACC.C255.GB



PJL05.3002.47

Grünzell®

Optical Accessories

Snoot
Powder coated aluminium

P-ACC.C248.SS



Glare Shield
Powder coated aluminium

P-ACC.C248.GS



Visor
Powder coated aluminium

P-ACC.C248.VS



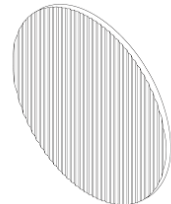
PJL05.3002.47

Grünzell®

Optical Accessories

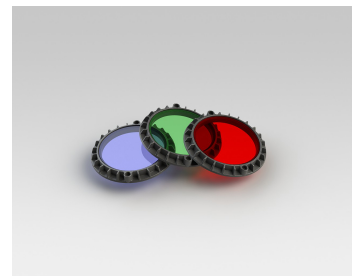
Linear Spreading Lens
Tempered Borosilicate Glass

P-ACC.C248.SL



Glass Colour Filter (Red, Green or Blue)
other colour on request

P-ACC.C248.GF



IP65 Driver Box (for remote driver operation)
Powder coated aluminium

P-ACC.xxx.DB.xx

Options -:

- 1 input, 1 output channel
- 1 input, 2 output channel
- 1 input, 3 output channel

